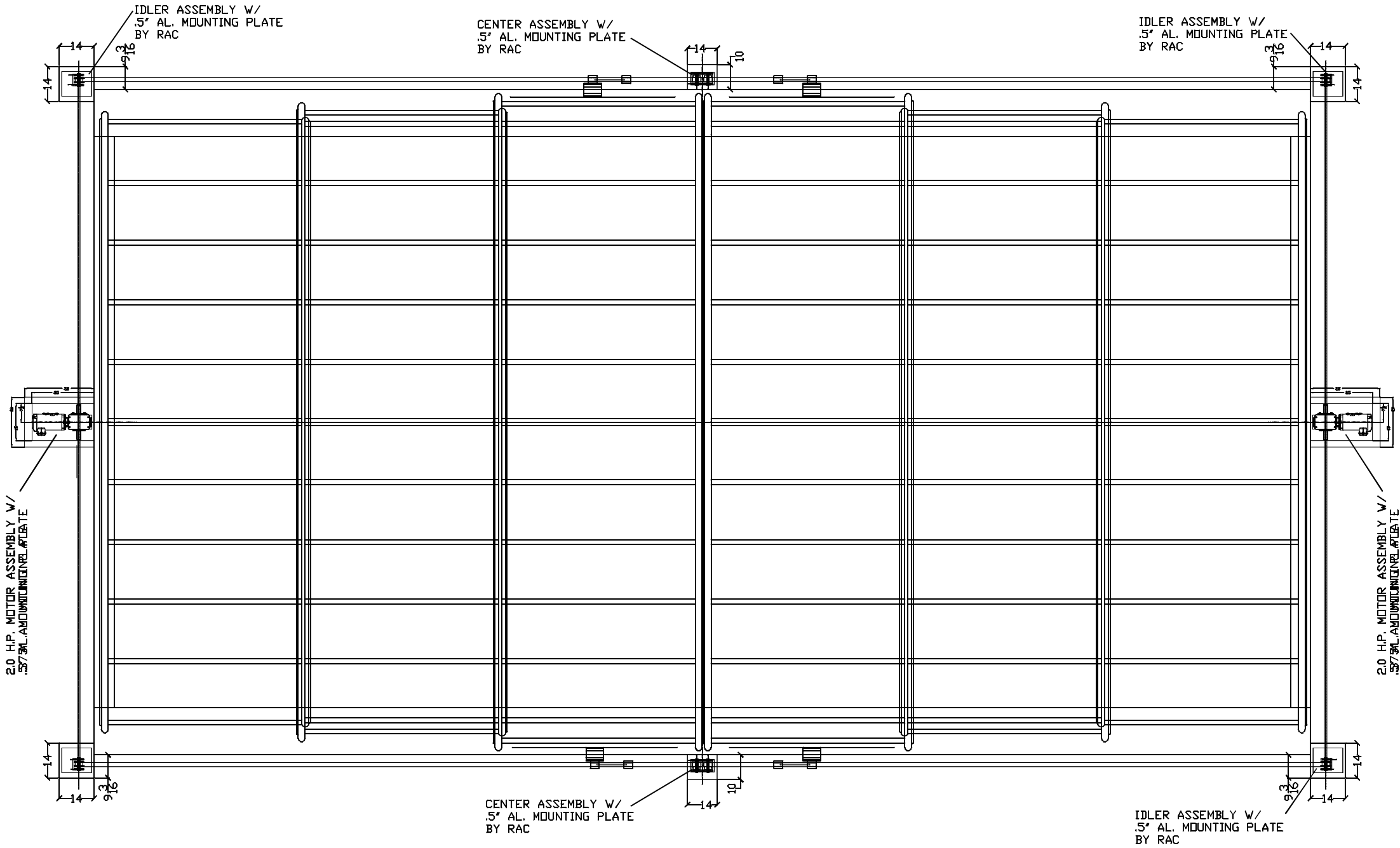


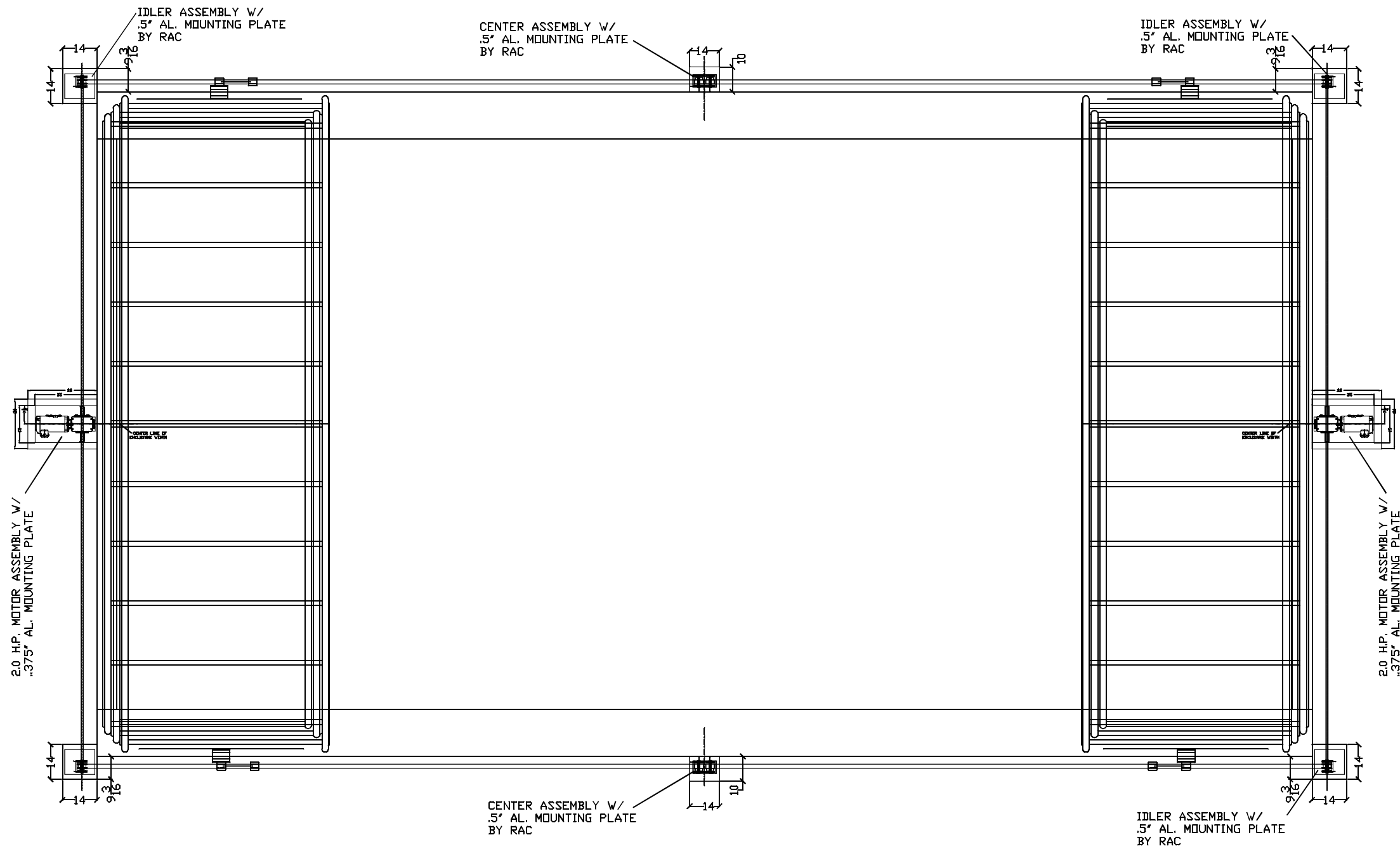
FREE STANDING -
CONVENTIONAL SKYLIGHT
2 MOTORS



RAC UNIT PLAN W/ MOTOR SYSTEM - CLOSED POSITION

DRAWING #: CFSS-02	JOB NAME & ADDRESS: CONVENTIONAL SKYLIGHT TWO MOTOR		ROLL-A-COVER INT'L 36 SARGENT DR. BETHANY, CT 06524	
	SHEET #: MOTOR 5 OF 8	SCALE: SALESMAN: M MORRIS DRAWN BY: K. TAYLOR	Tel: 203-393-7892 Fax: 203-286-2012 www.rollacover.com	
ORIGINATION		REVISED	REVISED	REVISED
DATE: 09-17-25				

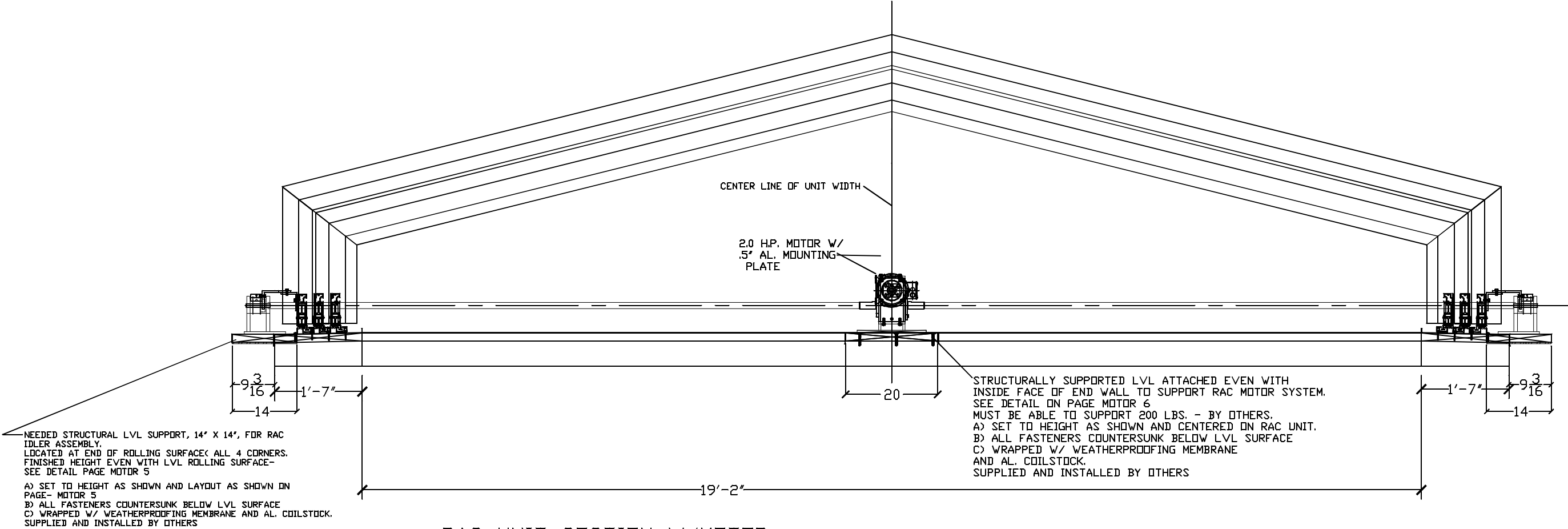
FREE STANDING -
CONVENTIONAL SKYLIGHT
2 MOTORS



RAC UNIT PLAN W/ MOTOR SYSTEM - OPEN POSITION

DRAWING #: CFSS-02		JOB NAME & ADDRESS: CONVENTIONAL SKYLIGHT TWO MOTOR	SCALE: 1/4" = 1'-0"	ROLL-A-COVER INT'L 36 SARGENT DR. BETHANY, CT 06524
SHEET #: MOTOR 2 OF 8			SALESMAN:	
		ORIGINATION DATE: 09-17-25	DRAWN BY: K. TAYLOR	

FREE STANDING -
CONVENTIONAL SKYLIGHT
2 MOTORS



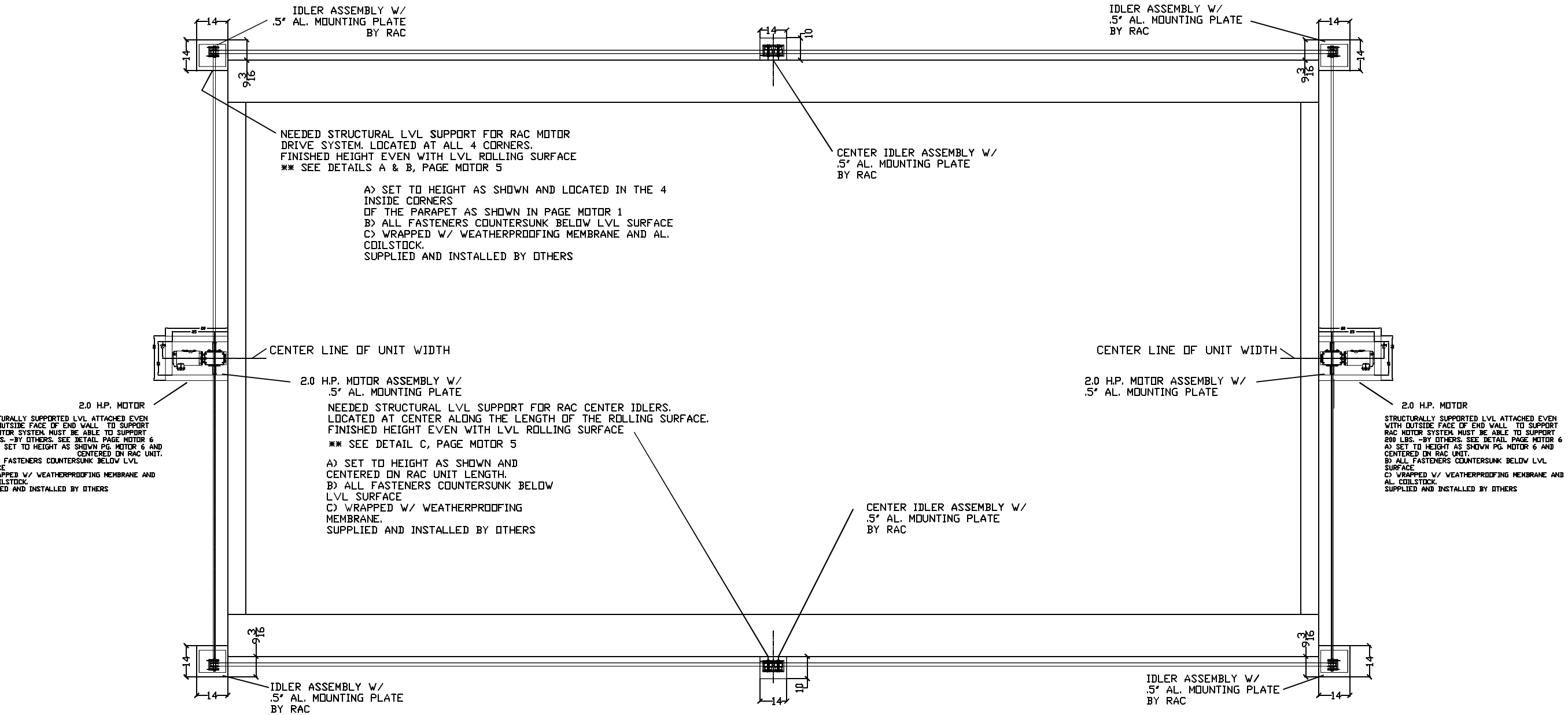
RAC UNIT SECTION W/MOTOR

- NOTE: STRUCTURAL STEEL SUPPORT & LVL BLOCKING UNDER ALL MOTOR COMPONENTS - BY OTHERS
- TOP OF BLOCKING TO BE EVEN WITH THE TOP OF LVL SILL
 - MUST BE INSTALLED STRAIGHT, LEVEL, PLUMB WITH NO DEVIATIONS AND
 - PARALLEL TO REAR HEADER LVL.
 - ALL FASTENERS TO BE COUNTERSUNK BELOW SURFACE
 - WRAPPED WITH WEATHERPROOFING MEMBRANE (WATER & ICE) ON TOP BUT
 - NOT GLUED DOWN.
 - TO BE INSTALLED BY OTHERS

DRAWING #: CFSS-02	JOB NAME & ADDRESS: CONVENTIONAL SKYLIGHT TWO MOTOR		SCALE: 1/4" = 1'-0"
			SALESMAN:
SHEET #: MOTOR 3 OF 8	ORIGINATION DATE: 09-17-25	REVISED REVISED REVISED	DRAWN BY: K. TAYLOR

ROLL-A-COVER INT'L
36 SARGENT DR.
BETHANY, CT 06524
Tel: 203-393-7292
Fax: 203-286-2012
www.rollacover.com

FREE STANDING -
CONVENTIONAL SKYLIGHT
2 MOTORS



RAC PRELIMINARY MOTOR COMPONENT POSITIONS
BLOCKING REQUIRED AT ALL LOCATIONS
CONTROL BOX TO BE LOCATED IN A SECURE AREA
EACH IDLER & MOTOR STATION WILL REQUIRE ADDITIONAL STRUCTURAL
SUPPORT TO BE DESIGNED AND INSTALLED - BY OTHERS

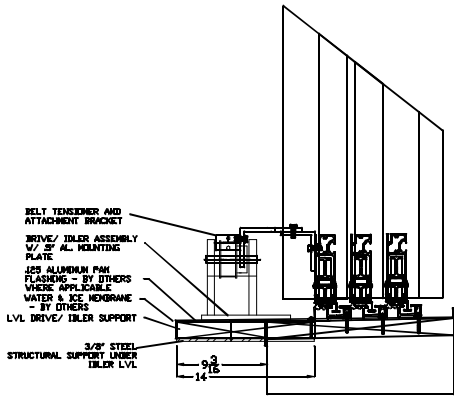
ROLL-A-COVER INT'L
36 SARGENT DR,
BETHANY, CT 06524
Tel: 203-393-7292
Fax: 203-286-2012
www.rollacover.com

SCALE: 1/4" = 1'-0"
SALESMAN:
DRAWN BY: K. TAYLOR

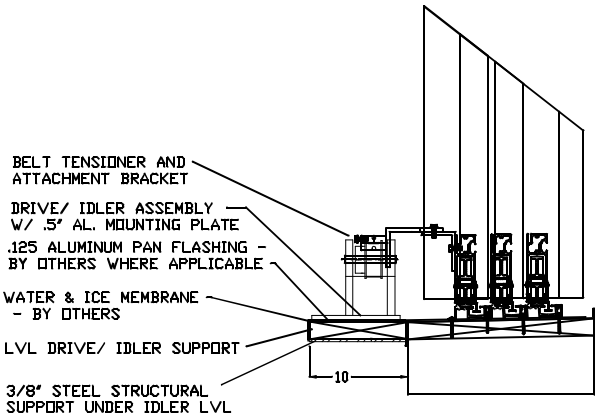
JOB NAME & ADDRESS:
CONVENTIONAL SKYLIGHT
TWO MOTOR
ORIGINATION
REVIS
REVIS
REVIS
REVIS
DATE: 09-17-25

DRAWING #:
CFSS-02
SHEET #:
MOTOR
4 OF 8

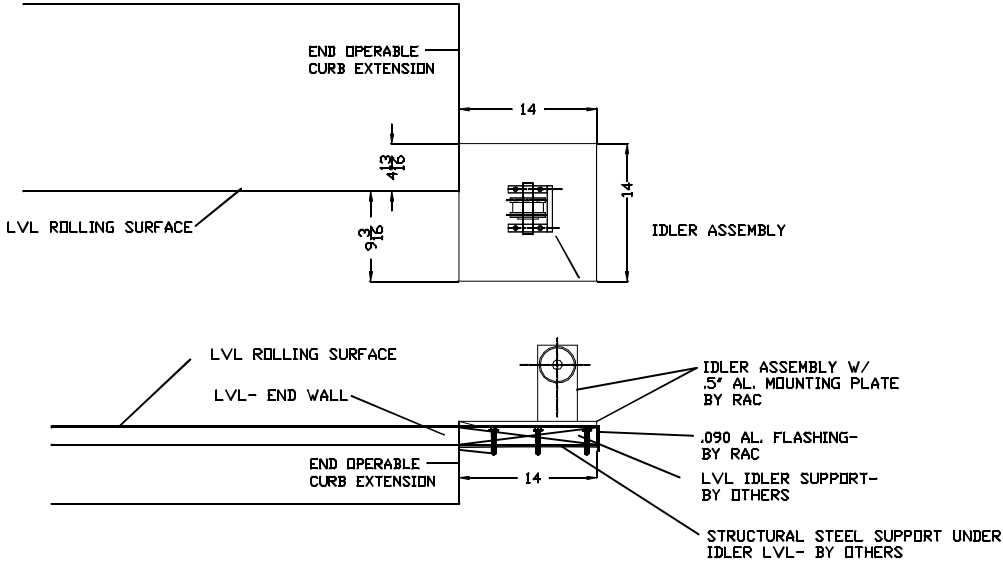
FREE STANDING -
CONVENTIONAL SKYLIGHT
2 MOTORS



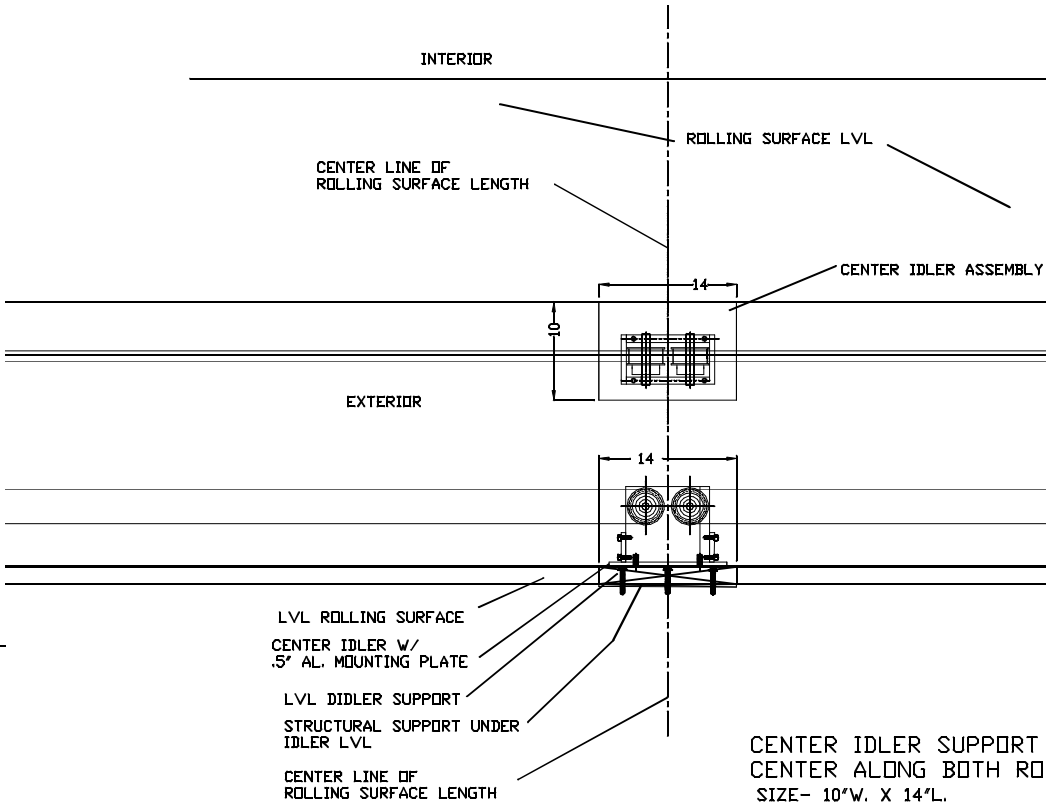
DRIVE/ IDLER DETAIL
SIZE- 14"W. X 14"L.
NEEDED STRUCTURAL LVL SUPPORT, 14" X 14", FOR RAC MOTOR ASSEMBLY.
LOCATED AT END OF ROLLING SURFACE< ALL 4 CORNERS.
FINISHED HEIGHT EVEN WITH LVL ROLLING SURFACE
A) SET TO HEIGHT AS SHOWN AND LAYOUT AS SHOWN IN MOTOR PLAN VIEW.
B) ALL FASTENERS COUNTERSUNK BELOW LVL SURFACE
C) WRAPPED W/ WEATHERPROOFING MEMBRANE AND AL. COILSTOCK.
SUPPLIED AND INSTALLED BY OTHERS



CENTER IDLER DETAIL
SIZE- 10"W. X 14"L.
NEEDED STRUCTURAL LVL SUPPORT FOR RAC CENTER IDLERS.
LOCATED AT CENTER ALONG THE LENGTH OF THE ROLLING SURFACE.
FINISHED HEIGHT EVEN WITH LVL ROLLING SURFACE
A) SET TO HEIGHT AS SHOWN AND CENTERED ON RAC UNIT LENGTH.
B) ALL FASTENERS COUNTERSUNK BELOW LVL SURFACE
C) WRAPPED W/ WEATHERPROOFING MEMBRANE.
SUPPLIED AND INSTALLED BY OTHERS



DRIVE & IDLER ASSEMBLY SUPPORT DETAIL-
BY OTHERS
NEEDED STRUCTURAL LVL SUPPORT, 14" X 14", FOR RAC MOTOR ASSEMBLY.
LOCATED AT END OF ROLLING SURFACE< ALL 4 CORNERS.
FINISHED HEIGHT EVEN WITH LVL ROLLING SURFACE
A) SET TO HEIGHT AS SHOWN AND LAYOUT AS SHOWN IN MOTOR PLAN VIEW.
B) ALL FASTENERS COUNTERSUNK BELOW LVL SURFACE
C) WRAPPED W/ WEATHERPROOFING MEMBRANE AND AL. COILSTOCK.
SUPPLIED AND INSTALLED BY OTHERS



CENTER IDLER SUPPORT DETAIL
CENTER ALONG BOTH ROLLING SURFACES)
SIZE- 10"W. X 14"L.
NEEDED STRUCTURAL LVL SUPPORT FOR RAC CENTER IDLERS.
LOCATED AT CENTER ALONG THE LENGTH OF THE ROLLING SURFACE.
FINISHED HEIGHT EVEN WITH LVL ROLLING SURFACE
A) SET TO HEIGHT AS SHOWN AND CENTERED ON RAC UNIT LENGTH.
B) ALL FASTENERS COUNTERSUNK BELOW LVL SURFACE
C) WRAPPED W/ WEATHERPROOFING MEMBRANE.
SUPPLIED AND INSTALLED BY OTHERS

ROLL-A-COVER INT'L
36 SARGENT DR.
BETHANY, CT 06524

www.rollacover.com
Tel: 203-393-7292
Fax: 203-286-2012

SCALE: 1/4" = 1'-0"

SALESMAN:

DRAWN BY: K. TAYLOR

JOB NAME & ADDRESS:

CONVENTIONAL SKYLIGHT
TWO MOTOR

DRAWING #:

CFSS-02

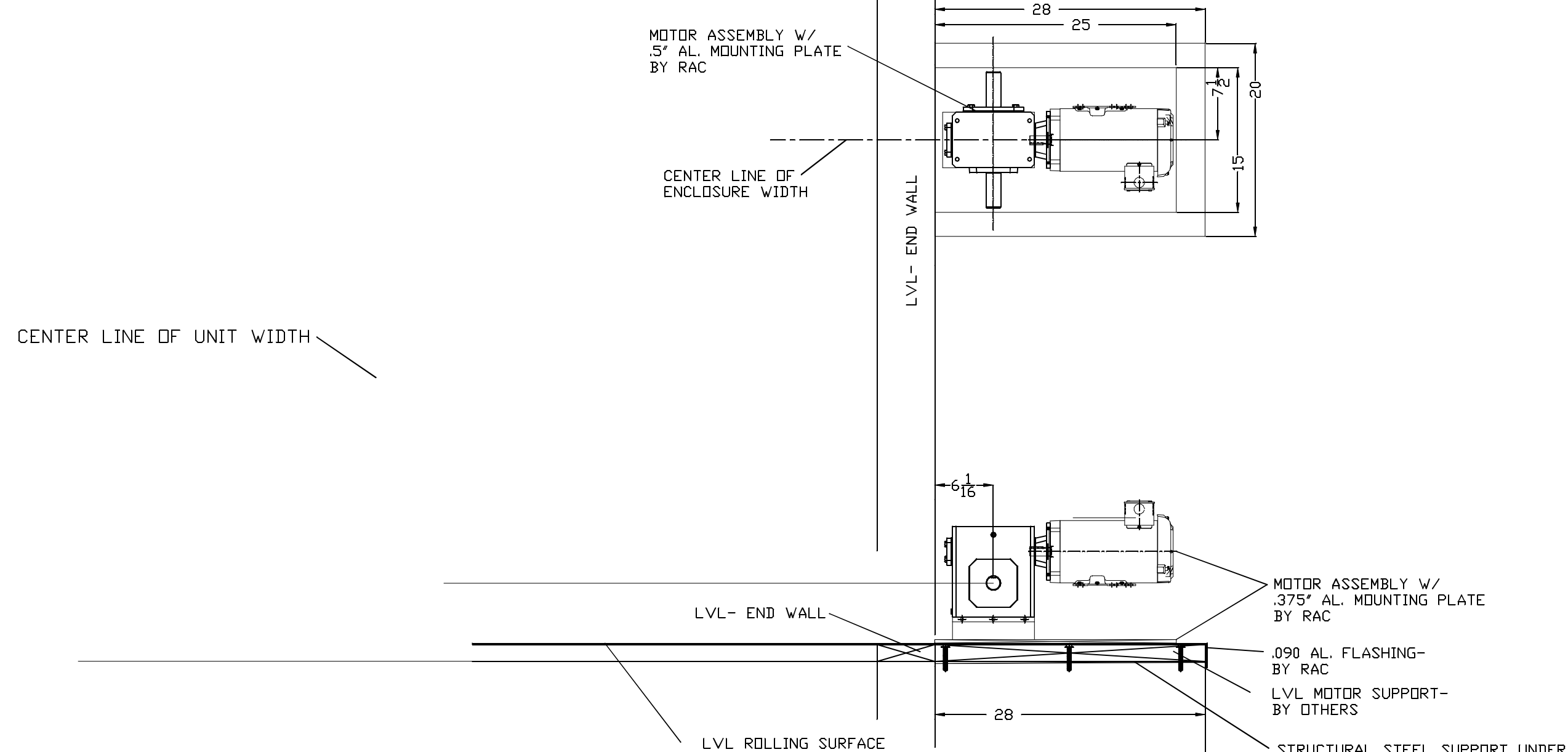
SHEET #:

MOTOR
5 OF 8

ORIGINATION REVISION REVISION REVISION

DATE: 09-17-25

FREE STANDING -
CONVENTIONAL SKYLIGHT
2 MOTORS

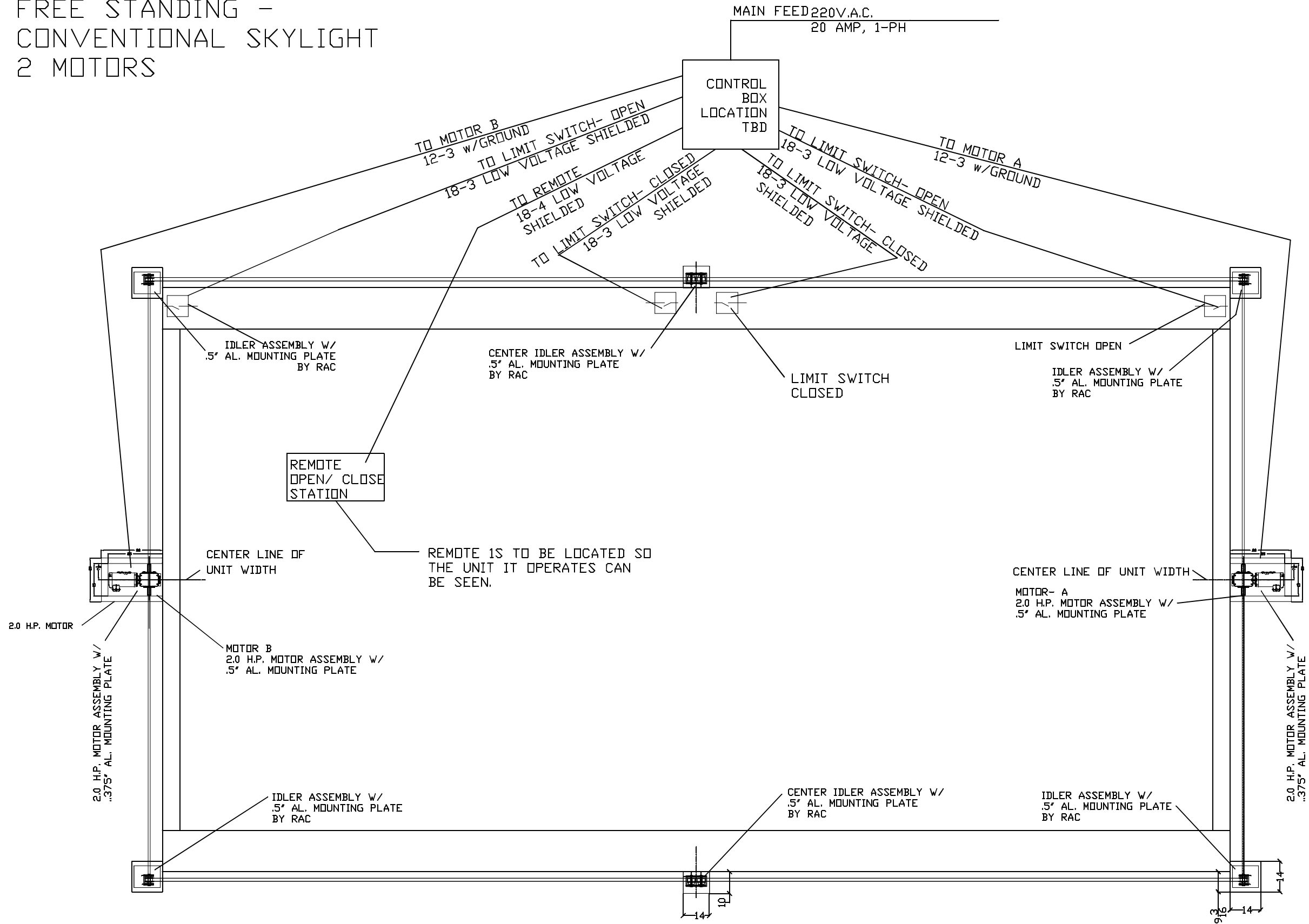


MOTOR ASSEMBLY SUPPORT DETAIL-
BY OTHERS

NEEDED STRUCTURAL STEEL & LVL SUPPORT, 16" X 20", FOR RAC MOTOR ASSEMBLY.
LOCATED AT CENTER ALONG THE WIDTH OF THE END WALL.
FINISHED HEIGHT EVEN WITH LVL ROLLING SURFACE
A) SET TO HEIGHT AS SHOWN AND CENTERED ON RAC UNIT WIDTH.
B) ALL FASTENERS COUNTERSUNK BELOW LVL SURFACE
C) WRAPPED W/ WEATHERPROOFING MEMBRANE AND AL. COILSTOCK.
SUPPLIED AND INSTALLED BY OTHERS

DRAWING # CFSS-02	JOB NAME & ADDRESS: CONVENTIONAL SKYLIGHT TWO MOTOR		SCALE: 1/4" = 1'-0"		ROLL-A-COVER INT'L 36 SARGENT DR. BETHANY, CT 06524	
	SHEET # MOTOR 6 OF 8	ORIGINATION REVISED REVISED REVISED	SALESMAN: DRAWN BY: K. TAYLOR		Tel: 203-393-7292 Fax: 203-286-2012 www.rollacover.com	

FREE STANDING -
CONVENTIONAL SKYLIGHT
2 MOTORS



RAC ELECTRICAL PLAN

ROLL-A-COVER INT'L

36 SARGENT DR.
BETHANY, CT 06524

Tel: 203-393-7292
Fax: 203-286-2012
www.rollacover.com

SCALE: $1/4'' = 1'-0''$

SALESMAN:

DRAWN BY: K. TAYLOR

JOB NAME & ADDRESS:

CONVENTIONAL SKYLIGHT
TWO MOTOR

ORIGINATION	REVISED	REVISED	REVISED
DATE: 09-17-25			

DATE: 09-17-25

DRAWING #:

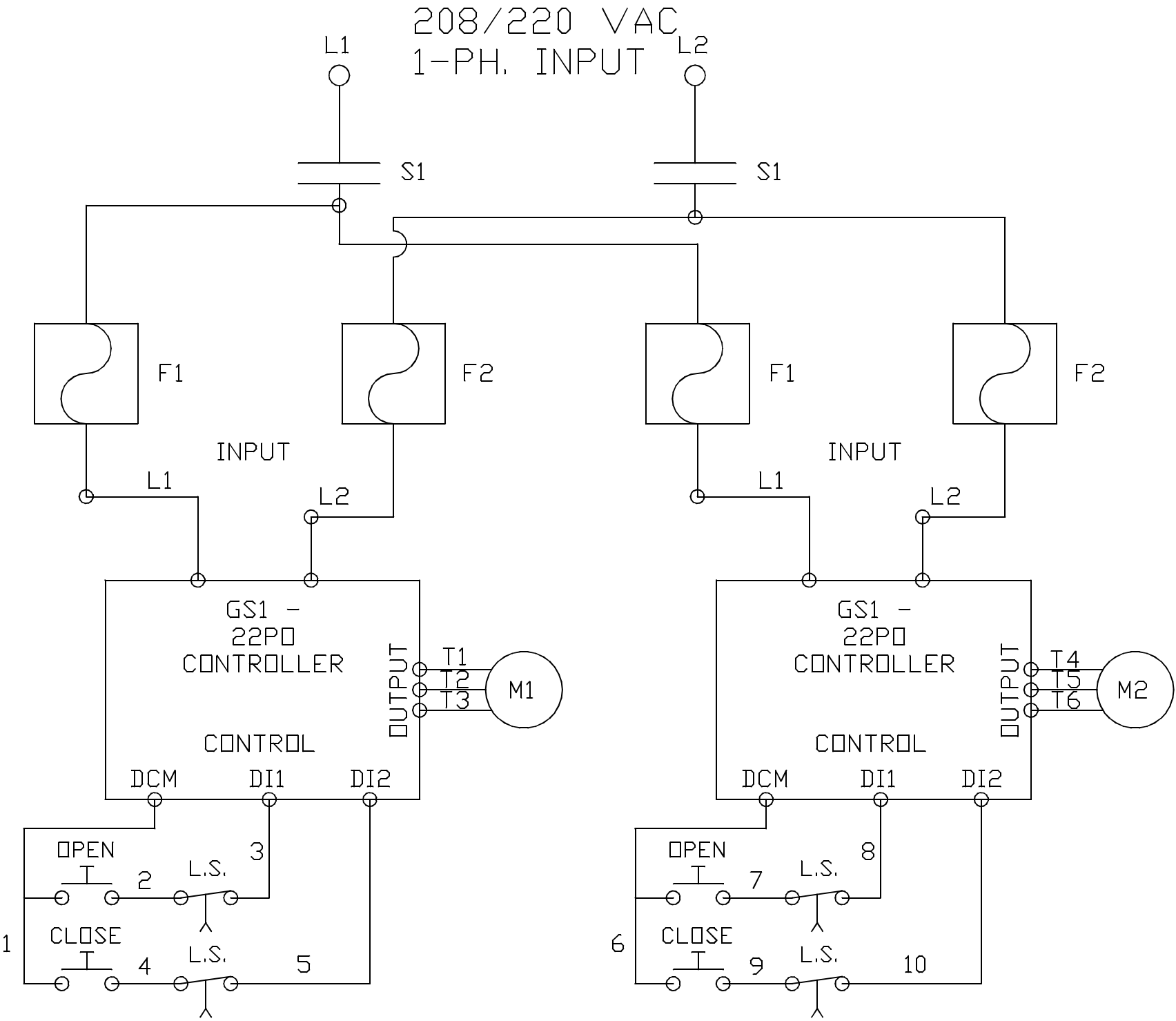
CSS-02

SHEET # 133HS

MOTOR
7 DE 8

FREE STANDING -
CONVENTIONAL SKYLIGHT
2 MOTORS

2 MOTOR-
WIRING SCHEMATIC



DRAWING #: CFSS-02		JOB NAME & ADDRESS: CONVENTIONAL SKYLIGHT TWO MOTOR		SCALE: 1/4" = 1'-0"		ROLL-A-COVER INT'L 36 SARGENT DR. BETHANY, CT 06524	
SHEET #: MOTOR 8 OF 8		ORIGINATION DATE: 09-17-25		SALESMAN:		Tel: 203-393-7292 Fax: 203-286-2012 www.rollacover.com	
				DRAWN BY: K. TAYLOR			